

Thelwall House

Thelwall House, Herbert Close, Oxford, OX4 2AY

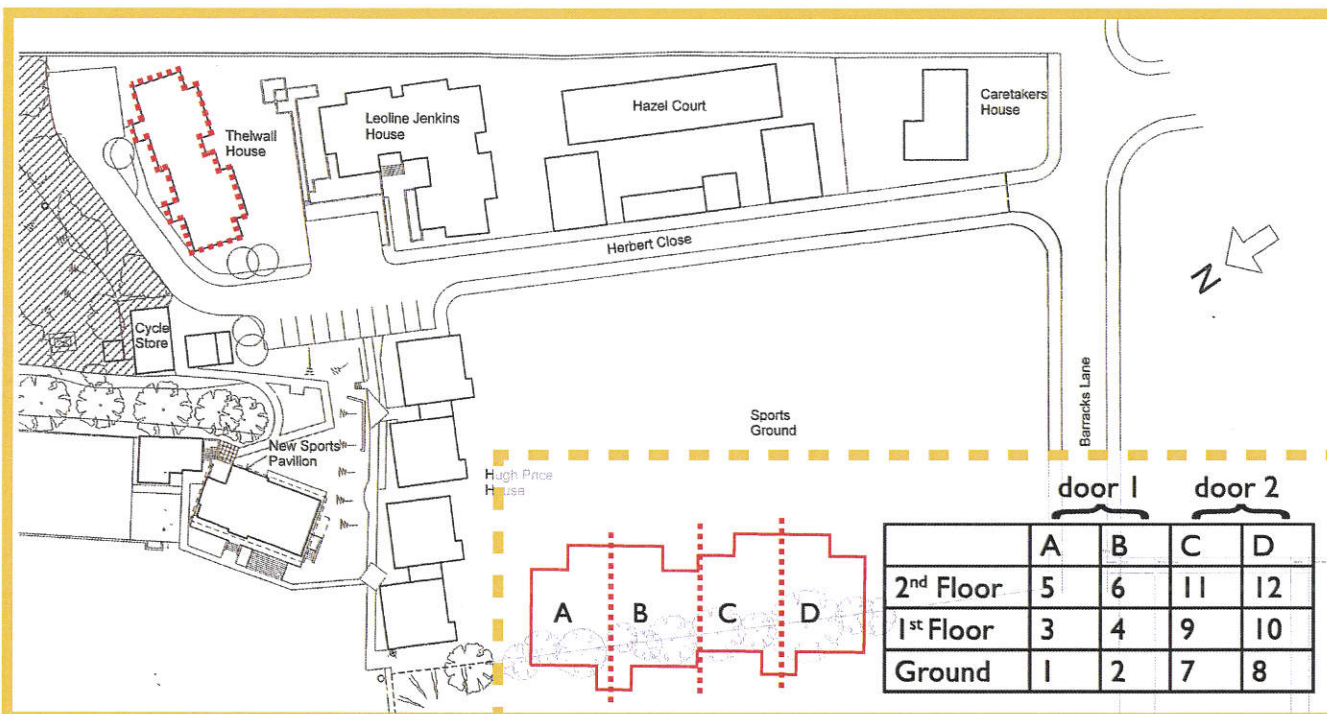
Description: 12 one bedroomed flats. Built in 1997/8

Entrance hall, living room with kitchen off, double bedroom, bathroom with bath and shower over, small study.

Gas heating and hot water. Electric cooker.

One ground floor flat is fully accessible to wheelchairs.

UTILITY COSTS:THELWALL			
	2009/10		
	Highest	Lowest	Average
Electric	219.50	6.23	93.39
Gas	415	57.78	192.69
	2010/11		
	Highest	Lowest	Average
Electric	195.68	22.03	92.39
Gas	375.52	87.32	173.32



EXTERNAL PHOTOS

